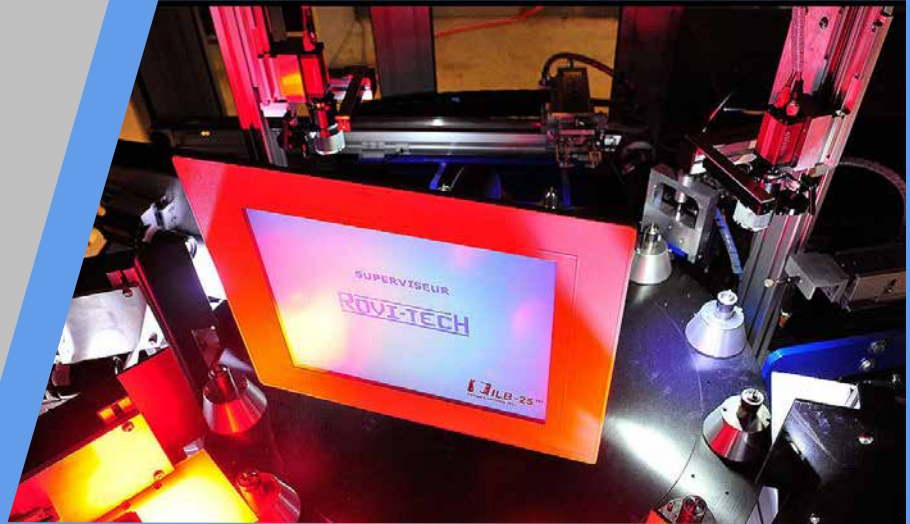


## ROLLER BEARING-CHECK

Machine Vision Based Inspection System  
for aeronautical roller bearings

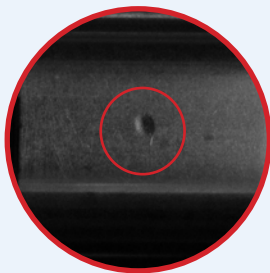


### Quality control of the surface of the rollers

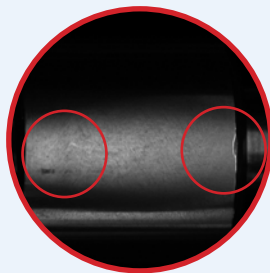
At a rate of 6 seconds per piece (for smallest diameters),  
8 cameras check the surface quality of the rollers.  
Inspection of rollers from 5 mm to 24 mm high.  
Machine qualified by recognized manufacturers of the industry.  
**Detection of defects on surfaces, diameters down to 3  $\mu\text{m}$ .**

### Defect Examples

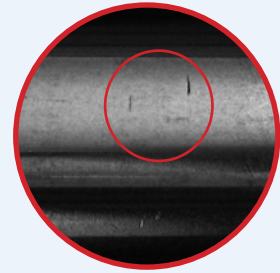
Chock



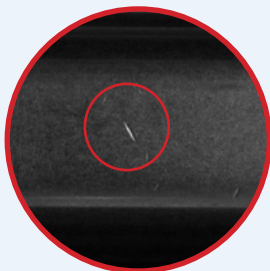
Stain and chock



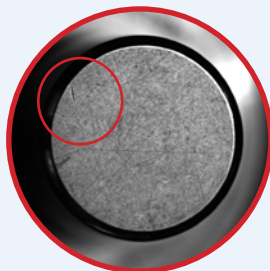
Notch



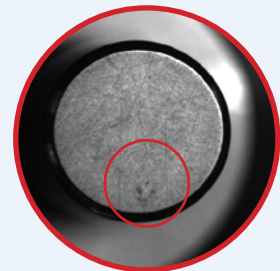
Notch

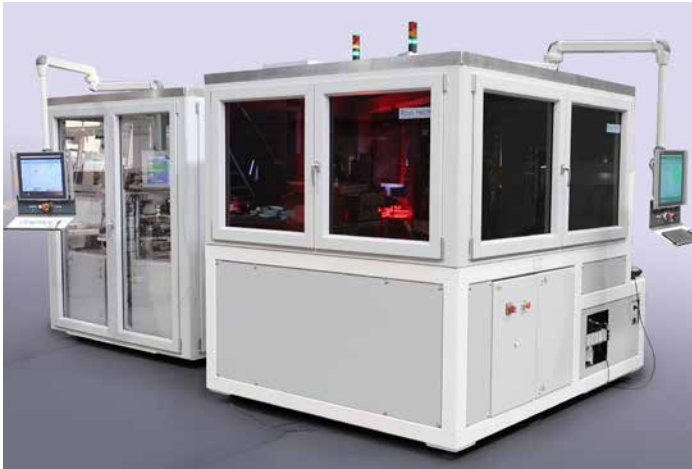


Notch on front



Stain on front





Vision sorting machine & ranking machine (dimensions and material)

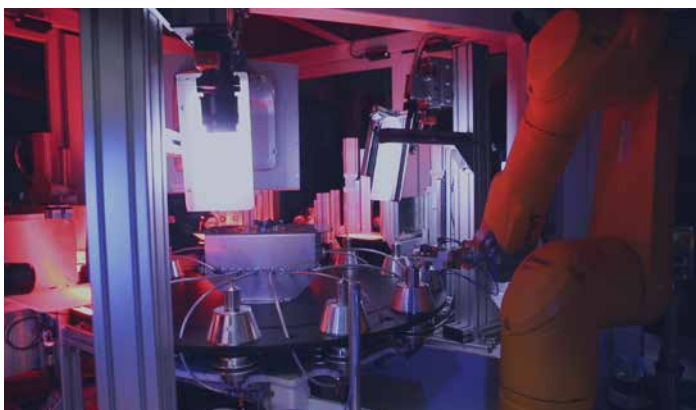
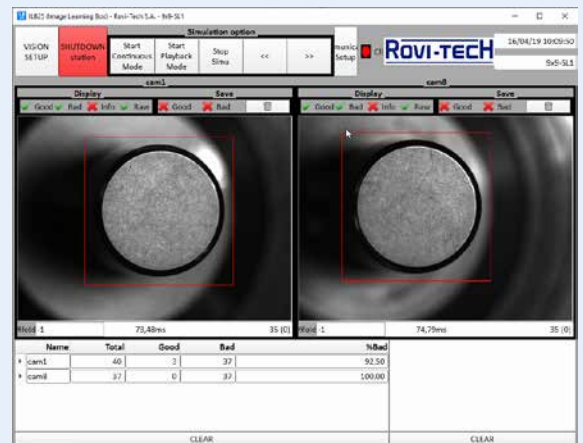
**Characteristics**

- Industrial design ■
- 8 cameras ■
- Industrial LED lighting ■
- Touchscreen interface ■
- Configurable ejection system ■
- Simple mechanics ■
- Autonomy of 8 hours ■

• In partnership with **Desimone**

**ILB-25 - ROVI-TECH vision platform**

- Large library of analysis tools
- Neural classification
- Configuration through teaching
- Evolutionary architecture
- Traceability of results
- Production statistics
- High speed
- Ability to categorize faults (ejection and / or selective statistics)
- Production monitoring via graphics ...



**Services**

- Pre-engineering ■
- Prototyping ■
- Feasibility studies ■
- Production & Installation ■
- On-site start-up ■
- Maintenance contract ■
- Hotline service ■
- Training ■