

CAR DOOR STRIKE-CHECK

Machine Vision Based Inspection System
for car door strikes

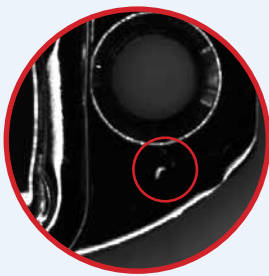


Quality control of the chrome surface

At a rate of 2 seconds per piece,
11 cameras check the surface quality of the base plate and the wire of the strikes.

Defect Examples

Bubble



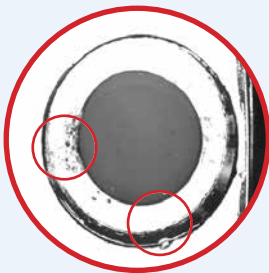
Stain



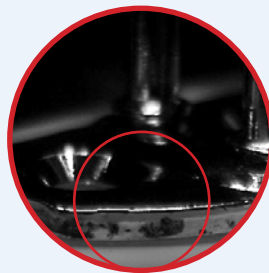
Burn



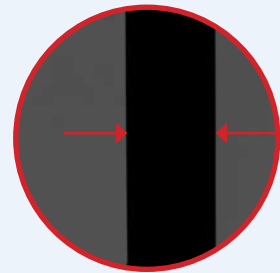
Defect in the chamfer



Defect on the flank



Measure wire diameter





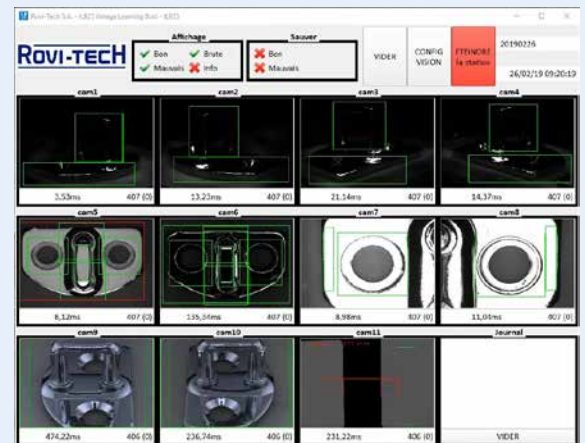
Characteristics

- Industrial design ■
- 11 cameras ■
- Industrial LED lighting ■
- Touchscreen interface ■
- 4 automatic reject systems ■
- Simple mechanics ■
- Autonomy of 4 hours ■

• In partnership with **Desimone**

ILB-25 - ROVI-TECH vision platform

- Large library of analysis tools
- Neural classification
- Configuration through teaching
- Evolutionary architecture
- Traceability of results
- Production statistics
- High speed
- Ability to categorize faults (ejection and / or selective statistics)
- Production monitoring via graphics ...



Services

- Pre-engineering ■
- Prototyping ■
- Feasibility studies ■
- Installation ■
- On-site start-up ■
- Maintenance contract ■
- Hotline service ■
- Training ■